



***Celebrating 9 years +
Successful Educational Cooperation***



International Collaborated Programme

**FOUR YEAR B.TECH FROM JNTUA, INDIA
B.S FROM BTH, SWEDEN -
(WITH OPTION TO CONTINUE M.S AT BTH, SWEDEN)**

**OFFERED BY
JAWAHARLAL NEHRU TECHNOLOGICAL UNIVERSITY
ANANTAPUR(JNTUA), INDIA
IN COLLABORATION WITH
BLEKINGE INSTITUTE OF TECHNOLOGY(BTH), SWEDEN**



Admission Booklet (2025-2026)

FOR PROSPECTIVE STUDENTS



About JNTU Anantapur

The College of Engineering, Anantapur was started at Guindy, Madras in 1946 and shifted to Anantapur in 1948. The college was initially affiliated to Madras University during 1946-1955 and to Sri Venkateswara University, Tirupathi during 1955-1972. In 1972, by an Act of the State Legislature, JNT University was established at Hyderabad, and the College of Engineering, Anantapur went into the fold of JNTU. Later in the year 2008, by an Act of the AP State Legislature, JNTU was trifurcated into three independent universities viz., JNTU Hyderabad, JNTU Kakinada and JNTU Anantapur. JNTU College of Engineering, Anantapur became a constituent college of JNTU Anantapur and the college was renamed as JNTUA College of Engineering, Anantapur. Today has four constituent colleges, 74 Engineering Colleges, 36 Pharmacy Colleges, and 24 stand-alone MBA/MCA colleges affiliated to it. Since its inception, JNTUA has been committed to developing and nurturing technological education and intends to produce technical manpower of high quality, comparable to the best in the world.

Our Vision

To be a world-class Technological University to excel in teaching, innovative research, and consultancy in the disciplines of Engineering, Science & Technology, Pharmaceutical Science, and Management thereby empowering the stakeholders to compete globally.

Our Mission

To achieve the goals by continuously upgrading the curriculum catering to the societal needs and industrial requirements, by conducting research in intra, inter, multi and trans-disciplinary areas, and by imparting quality education for enhancing knowledge, employability skills, and entrepreneurship capabilities through a startup environment.

Accreditation and Rankings

- Accredited by National Assessment and Accreditation Council (NAAC) by 'A' grade
- QS Asia University Ranking 2024: 651-700
- QS India University Ranking 2024: 100
- THE World University Ranking 2024: 801-1000
- THE Asia University Ranking 2025: 251-300
- NIRF Ranking 2024: 151-200



About BTH

Blekinge Institute of Technology, BTH, is a public university established by the Government of Sweden. BTH has a distinctive focus on the digitalization of society and sustainability. Our task is to contribute to a more sustainable societal development through higher education, research, and innovation.

The study programmes are of high quality, student-centered, and linked to research, intended for national and international students. Our education focuses on society's future needs and challenges and is carried out in close collaboration with society at large. We offer study programmes in different cycles, as well as single-subject courses, which are given both on campus and through remote learning.

The educational environment supports the students in becoming good colleagues, leaders, and innovators with the knowledge and ability to predict and generate changes and external engagement with broader society.

Additionally, the private sector contributes by making us more attractive to ensure that our education and research maintain high quality and relevance.

With a degree from BTH, students create conditions for society's development in digitalization and sustainability.

BTH is ranked number 1 in Europe & number 5 in the world in the area of Software Engineering.

BTH is ranked among the top 650 in the area of Computer Science according to QS 2021/2022 ranking.



1. General Regulations for International Collaborated Programme

1. This programme is designed for the advantage of the Student Community through which students can acquire four year B.Tech. from JNTUA and a B.S. from Blekinge Institute of Technology (BTH), Sweden and also have an option to continue Masters in BTH, Sweden.
2. The enrolled student shall study the first three years of education at the College of Engineering Anantapur and rest of the three years of education at BTH, Sweden. i.e. One year mandatory studies during the bachelors and two years of optional study for the Masters at BTH.
3. The enrolled student can exit the programme after successful completion of 4 years of study i.e. 3 years at the College of Engineering, Anantapur, and one year at BTH with a Bachelor of Technology degree from JNTUA and Bachelor of Science degree from BTH Sweden under double degree cooperation.
4. The objective of the programme is to make students qualified for a global industrial career or prepare for higher studies (i.e. master's studies/ research education).
5. Applications for admission into the programme will be processed by JNTUA India in association with Blekinge Institute of Technology, Sweden.
6. **There will be no provision for students to discontinue the studies in the middle of the programme and claim an alternative degree or claim to continue the entire education at JNTUA i.e. without mobility to BTH, Sweden**
7. All admissions are purely provisional, and the University reserves the right to cancel the admission at any stage.
8. All the enrolled students can avail the placements at JNTUA as per the guidelines.



2. Specialisation, Degrees and Intake

OFFERED PROGRAMMMES, DEGREES AND SEATS

A) CSE FACULTY:

1) INTERNATIONAL COLLABORATED PROGRAMME IN COMPUTER SCIENCE (20 SEATS)

Under graduation: B.Tech. in Computer Science & Engineering from JNTUA , B.S. in Computer Science from BTH, Sweden

Postgraduation: M.S. in Computer Science or M.S. in Software Engineering or M.S. in Computer Science in Specialisation "Artificial Intelligence and Machine learning" from BTH, Sweden

B) ECE FACULTY:

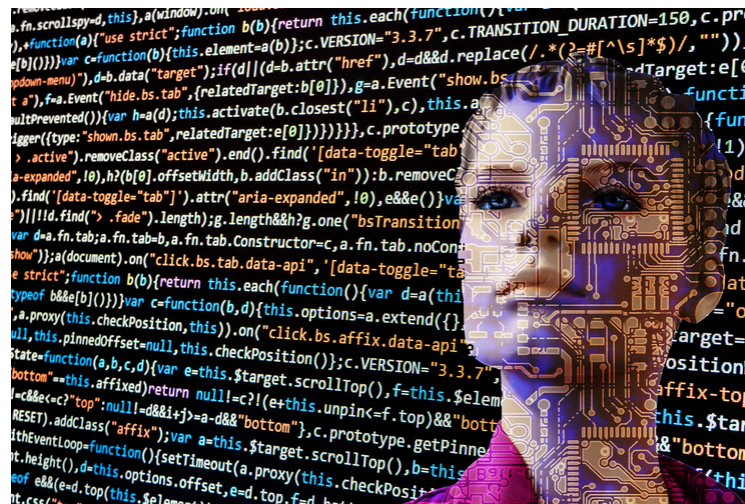
1) INTERNATIONAL COLLABORATED PROGRAMME IN MACHINE LEARNING, SENSORS & SYSTEMS (10 SEATS)

Under graduation: B.Tech. in Electronics & Communication Engineering from JNTUA, B.S. in Electrical Engineering from BTH, Sweden

Postgraduation: M.S. in Electrical Engineering in Specialisation "Machine Learning, Sensors & Systems" from BTH, Sweden

EXIT OPTION WITH BACHELOR STUDIES

The enrolled student can exit the programme after successful completion of 4 years of study i.e. 3 years at JNTUA and one year at BTH with a Bachelor of Technology degree, which will be awarded by JNTUA by accrediting the one year (two semesters) mandatory education credits (includes UC project) from Blekinge Institute of Technology, Sweden through the transfer of credits to JNTUA. The enrolled students will also have the possibility to seek a bachelor's degree (B.S.) from BTH Sweden after completion of 4 years of education under double degree cooperation. The information on the degrees awarded is mentioned above.



3. Masters programmes

The following master's programme are offered under collaboration with JNTUA.

COMPUTER SCIENCE

The Master's programme in computer science is a broad education with the opportunity to study several courses in the computer science field. The programme requires significant knowledge in programming. If you are interested in a specific area, you can profile and deepen your knowledge in this field through elective courses. The programme has three main directions: IT security, Intelligent Systems, and Distributed and Parallel Systems.

SOFTWARE ENGINEERING

The Master's programme in Software Engineering deals with the complex challenges facing the software developers of the future. You acquire a wide understanding and base of knowledge through education and training in advanced concepts within software engineering, covering the entire development process. You learn how to construct and test software products to meet the challenges of tomorrow, with high demands on efficiency and quality. You also learn how to reflect upon and improve modern development processes.

From start to finish – each process, step, and action

The education provides you with the skills and knowledge required to engineer software systems from the initial planning and scoping of projects to the process of development, testing, and delivery of the software system itself. The courses cover both engineering and working methodology and you will study subjects such as project planning, software quality, and research methodology.



Masters programmes...

ARTIFICIAL INTELLIGENCE & MACHINE LEARNING

The Master's programme in AI and machine learning includes courses that provide engineers with knowledge and skills that are increasingly sought after in both industry and society as a whole. The education provides both theoretical and practical knowledge in a future-oriented field. The technology is already used today in various applications, such as decision support systems and autonomous vehicles, although it still has significant potential for further development. At BTH, we collaborate with industry, business, and other educational fields, which provides an education that is in line with reality and the developments in the industry.

The Master's programme provides a foundation that opens a career as a machine learning engineer, data analyst, specialist, strategic project manager, or with another senior position. The number of possible industries and professional roles is increasing as technology is used in even more domains.

MACHINE LEARNING & SENSORS

Complex systems are part of our everyday lives - from self-driving cars and energy infrastructure to health care and communication systems. To meet the future demands posed by such systems, multidisciplinary innovation is needed. The master's programme in Machine Learning, Sensors, and Systems offers a solid foundation for being part of the development towards the sustainable technology of tomorrow's societies. You will acquire a broad set of skills and knowledge, understanding when model and/or learning-based approaches are suitable, and get hands-on experience with hardware and sensors. The curriculum includes courses in both electrical engineering and computer science, e.g., signal processing, control theory, robotics, sensor systems, machine learning, and AI. It is designed in close collaboration with industry, who stresses the need for expertise in this combined area.



4. Eligibility, Selection Criteria, Tuition Fee & Scholarships

ELIGIBILITY

Candidates satisfying the following requirements shall be eligible for admission into the programme.

Candidates qualified with Intermediate Education (10+2 pattern) conducted by the A.P. Board of Intermediate Education (BIE)/CBSE/ICSE with Mathematics, Physics, and Chemistry subjects. The students should have a minimum of 60% marks during Intermediate education.

SELECTION CRITERIA

The selection will be based on qualified merit ranks obtained by the candidates in AP EAPCET-2025 / TG EAPCET-2025 / JEE(MAINS)-2025 / Equivalent entrance exams conducted by other states

Note: 50% seats are filled based on the AP EAPCET/ TG EAPCET rank (qualified rank), and the remaining 50% seats are filled based on JEE (MAINS). The leftover seats will be filled by merit marks obtained in (10+2),

TUTION FEE STRUCTURE

The following fee structure is applicable for the enrolled students.

Bachelor studies:

- The tuition for studies at JNTUA: 150 000 INR / year
- The tuition for studies at BTH, Sweden: 105 000 SEK/year

Master Studies:

The tuition fee for the master's studies at BTH, Sweden: 115 000 SEK/year

BTH Scholarships

*The students are eligible to apply for BTH Scholarship (Tuition fee waivers) programme for two levels of a tuition fee waiver on existing tuition fee for the fee movers at BTH i.e. The selection for the BTH scholarship will be done as per the merit of academic excellence among all the international students. BTH scholarships are subject to availability.



5. Living in Anantapur

ANANTAPUR

Anantapur city is the headquarters of Ananthapuramu district, which is a part of southwestern Andhra Pradesh state, south India. The city is located in the Rayalaseema uplands region, about 190 km north of Bengaluru (Bangalore). Anantapur lies on the main road between Hyderabad and Bengaluru. The city's name is derived from Ananda, the name of the wife of the diwan (official) of the medieval Hindu kingdom of Vijayanagar who built the city.

Both Rail and Road connectivity are available for the city. The nearest International airport is Kempegowda International Airport, Bengaluru which is 190 kilometers away. Anantapur is one of the fastest-developing cities in the state of Andhra Pradesh.

JNTUA CAMPUS

JNTUA Campus is situated in the heart of town. This college has a vast campus sprawling over an area of 185 acres, in a peaceful atmosphere, away from the dust and din of the town. With this, a new era was ushered in Technical Education. Consequently, there was an impetus to the academic activity of this college. Though the College was initially established to provide basic technical education, with the passage of time, it emerged out, as one of the colleges to fulfill the technical needs of our fast-developing India with highly professional and well-trained graduates.

JNTUA Campus is having 04 hostels for men which can accommodate more than 2000 students and 02 hostels exclusively for women with a capacity of more than 1000 seats. A special hostel facility is also there for foreign nationals.

The campus has two Guest houses, a canteen, and other facilities like Staff quarters.

The enrolled students can avail the hostel facility in the lush green campus of JNTUA during their first three years of study.



6. Transfer policy from JNTUA to BTH

As per the programme structure, the enrolled student shall be transferred to BTH to complete the rest of the programme. For the successful transition from JNTUA to BTH, the student should satisfy the following conditions.

TRANSITION TO BTH

Transition to BTH: The student should finish a minimum of 120 credits*of BTH, i.e. approx. 70% of their education up to the first 6 semesters of studies at JNTUA for transition to BTH. The student should also pass all the prerequisite courses identified by the BTH.

SPECIAL REQUIREMENT

The students, who have studied in other languages (medium of instruction other than English) during the intermediate education should demonstrate to meet the English language requirement through an internationally approved English test such as IELTS or TOEFL. The students should meet the English requirement by IELTS or TOEFL before seeking admission to the studies at BTH.

TOEFL: 575 / 90

IELTS: an overall mark of 6.5 and no section below 5.5

TRANSITION TO MASTER STUDIES

The student can continue the master's studies at BTH. They can enter the master's studies by completing a minimum of 180 credits of BTH (which should include a minimum of 45 credits (from their studies at BTH) and should have passed all the prerequisite courses for entry to master studies.

However, the master's degree will be awarded only after completion of all the courses in bachelor studies and master studies.

Note: One year of full-time studies is equal to 60 credits at BTH.



7. Residence Permits

REGULATIONS

As per the current regulations of the migration board, the students should be able to show a minimum financial requirement of 10584 SEK (Sweden Kronas) per month for the entire planned study period in Sweden. Documentation certifying one's own must be provided at the time of applying student residence permit,

The student must show to the migration board as per the mentioned details while applying for the residence permit.

FOR BACHELOR STUDIES

The study period shall comprise 10 months during the bachelor studies. The student should show a minimum financial requirement of SEK 105 840, Approx. INR 9.6 Lakhs (As per the present currency exchange rate*)

FOR MASTER STUDIES

The students should apply for a residence permit for studying master's after seeking admission to the master's programme after completing the bachelor's studies. The student should show a minimum financial requirement of 232 848 SEK, approx. 21 Lakhs (as per the present exchange rate*)

For more information "student residence permit" regulations:



Note: BTH's support office in India will provide guidance on residence permit/travel issues. However, students are responsible for showing the required financial proof to the migration authorities while applying for a student residence permit (VISA). Either BTH or JNTUA will not be responsible for the rejections caused on the grounds of insufficient financial funds/statements in front of the Migration Board. Students have to adhere to migration regulations applicable in the year of transition to BTH. The currency exchange/requirements of the migration board can change based on factors, that are not in the control of either JNTUA or BTH.



8. Living in Karlskrona

COST OF LIVING

Like anywhere else the cost of living is dependent on the individual lifestyle. According to the migration board, the student should meet the amount of 10314 SEK/ month towards living expenses during the stay in Sweden.

An estimated average monthly expenses are as follows:

- Food: SEK 2,770
- Accommodation: SEK 4,900
- Local travel: SEK 550
- Phone/internet: SEK 400
- Miscellaneous: SEK 1,964
- Total: SEK 10584

Tips:

Karlskrona being a small town, many of our students take advantage of that by using "cycle" instead of public transportation for commuting. Students also share the apartments legally to minimize the accommodation cost.

For more tips:



INSURANCE

The students are fully protected by comprehensive insurance provided by BTH. The insurance provides 24-hour coverage in Sweden. The insurance covers Medical and Emergency Dental Care, Home transport cover, Personal Liability Cover, Legal expenses, etc. The insurance is provided by Kammarkollegiet, a state authority under the Government of Sweden.

For more details about insurance:



For video about Karlskrona:





9. Student life in Karlskrona

ACTIVITIES

There are different types of student organizations like Blekinge Student Union, Erasmus Student Network, and KIDS (Student Organisation for Sports) that organize different social activities on campus.

Apart from the campus life, Karlskrona has an amazing environment – at the center of the archipelago – where the proximity to the sea gives the opportunity for sailing, sea kayaking, scuba diving or fishing during the summer and long-distance ice skating or ice yacht sailing during the winter. There are several professional sports clubs in the town. Many of our students play cricket and badminton in association with local clubs.

The city has a marine history, represented by the ubiquitous archipelago and various forms of naval activities. Karlskrona is considered to be so unique that UNESCO has placed the city on the World Heritage List.

Adjacent "towns - Ronneby & Karlshamn" also provide tourist places and also host different activities.

INDIAN COMMUNITY

BTH hosts the largest number of Indian students in Sweden. The multinational companies like Ericsson, Telenor, NKT, etc attract engineers from India. This helped to form an inclusive Indian community of approx. 500+ individuals comprised of students and families in and around Karlskrona. The community organizes cultural evenings and celebrates Indian festivals to integrate the Indian culture with Swedish society and vice versa.

For information about the
Blekinge student union:



For information about more
activities in Blekinge county:





10. Innovation Activities in Karlskrona

BTH INNOVATION OFFICE

Given BTH's profile with education and research focusing on technology, the BTH campus is a vital location for innovation.

BTH supports students through the BTH Innovation Office arranging seminars, workshops, and hackathons, along with personal coaching along the innovation journey.

In addition to BTH Innovation Office is part of the local innovation support system containing of Blue Science Park and Blekinge Business Incubator, to mention a few. The innovation support network stretches outside Blekinge and covers the southern parts of Sweden, through the BTH Innovation Office you reach a large network supporting innovative ideas.

BTH Innovation Office services are open for all students affiliated with BTH. Special considerations apply to international students based on their residence permit.

BLUE SCIENCE PARK

Blue Science Park is located on the extended Campus Gräsvik in close proximity to BTH.

Their mission is to drive technical advancements for the local companies in order to increase the companies innovative capabilities.

The vehicle to do so is close cooperation with companies, research, and education.

BLEKINGE BUSINESS INCUBATOR

Blekinge Business Incubator focuses on further developing tech-based start-up ideas through the early idea phases through incubation and acceleration with the mission to increase the number of successful startups in Blekinge.

Blekinge Business Incubator is labeled as an Excellence Incubation in Sweden.

ALUMNI - TECH FORCE TO SWEDISH INDUSTRY



Left to right. Uttej Reddy (JNTUH-Skyraft, Sweden), Nunna Tejaswi (JNTUK - Arm Sweden), Apuroop Paleti (JNTUH-Ericsson), Sumeesha Marakani (JNTUH-Volvo Cars Sweden), Mahesh Chandra, AO, QIK Sweden, Vishnu manasa devagiri (JNTUK-BTH)

Pic. Mattias Mattsson

11. Career in Sweden

Some examplesfrom JNTUA..

Students can apply for work seeking residence permits for one year after completion of studies to seek employment or start their own business in Sweden. For more information on residence permits:



Graduates of programme are successful in getting employment in Sweden in companies like, Ericsson, Volvo, Scania, Sigma etc.

SALARY LEVELS

The starting salary level for junior positions in the engineering domain is approx. 32 000-39 000 SEK (Approx. 2.4 Lakhs to 2.9 INR)/ Month in Sweden*.



SAI CHETAN POLURI
ECE (2017-2021)
Embedded SW Developer
Toyota SWEDEN



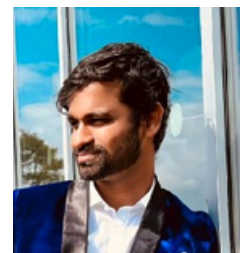
ANUDEEP ITHA
CSE (2017--2021)
Software Engineer
Ericsson, SWEDEN



Cutipalli Saaroopya
ECE (2017-2021)
Software Engineer
Ericsson, Sweden



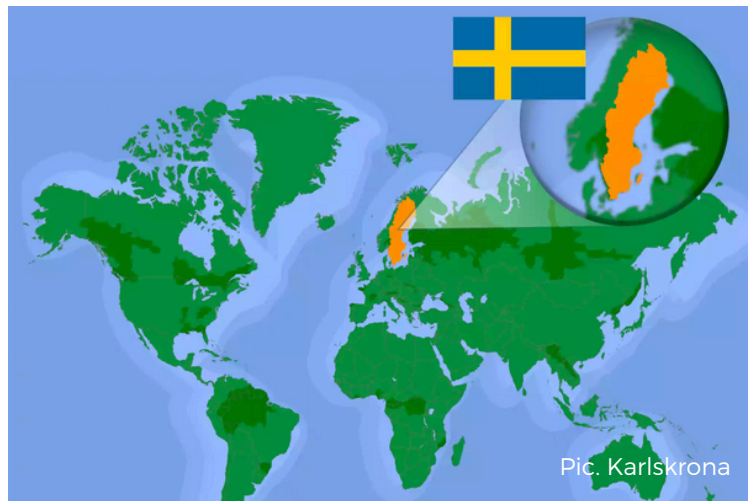
Dinesh Chakravarthi
ECE (2018-2022),
Software Engineer
Ericsson, SWEDEN



Sai Charan Dandu
CSE (2018-2022)
Component Engineer
Hitachi Energy, SWEDEN



Pic. Stockholm



Pic. Karlskrona



Pic. Karlskrona

12. About Sweden

For a sparsely populated country in the far north of Europe, Sweden has done remarkably well in establishing and maintaining an outstanding reputation abroad.

Sweden is a part of Scandinavia and the third largest country in Western Europe – almost the same size as Spain or France, and bigger than California, USA. Sweden is, however, a small country in terms of population, with only 10 million inhabitants – which is about 0.13% of the world population.

Today Sweden is one of the strongest economies in the world offering a high quality of life in a modern welfare society. It is a rich and well-educated country with large annual investments in education and research.

MULTICULTURAL COUNTRY

Sweden has become a multicultural country over the past fifty years. The official language is Swedish, but almost all Swedes are able to communicate in English.

A focus in the development of Swedish society has been on the environment. One reason for this is the Swedish population's emotional affinity with nature.

INNOVATIVE COUNTRY

The World Economic Forum (WEF) has ranked Sweden as one of the most competitive countries in the world in its Global Competitiveness Report, with top grades for macroeconomic stability and innovation capability.

HIGHER EDUCATION - HIGHLY RANKED

Higher education systems is ranked among the top 5 in the world according to U21 Ranking.

KEY FACTS

- Capital: Stockholm
- Population: 10,521,556 people, 0.13 percent of the world's population
- Life expectancy: Men 81.34 years, women 84.73 years
- Form of government: Constitutional monarchy, with parliamentary democracy – political power lies with the parliament and government; the monarch has ceremonial functions
- Currency: 1 krona (SEK) = 100 öre ≈ EUR 0.095
- Language: Swedish (main language)



For more information about Sweden.....



13.How to Apply, Enclosures & Key dates

Candidates are required to download the application form and Information booklet from the website. www.jntua.ac.in. The duly filled-in application form with two sets of enclosures and application processing fee of Rs.1,500/- in the form of DD drawn in any Nationalized bank in favor of "Registrar, JNTUA" payable at Ananthapuramu should reach the office of the Registrar, JNTUA, Ananthapuramu, Andhra Pradesh-515002, India by post or in person by 5.00 pm on or before: **17/07/2025**.

Office of the Registrar, JNTUA is not responsible for non-receipt or late receipt of applications sent by Post / Courier. Incomplete applications are liable to be summarily rejected. The students are advised to send a scanned copy of the applications to indiarelations@bth.se and dfaam@jntua.ac.in for reference.

ENCLOSURES

- Attested copies of Secondary Education (10th Class) certificate.
- Attested copies of Higher Secondary Education (10+2 Class pattern) certificate.
- Attested copies of Rank Card of JEE (MAINS) - 2025 /AP EAPCET - 2025 /TG EAPCET 2025 etc.
- Undertaking statement signed by the parent/guardian along with the applicant, stating that the applicant is capable of enough to fund the financial requirement (105840 SEK (approximately. 9.6 Lakhs) for 2 semesters) to pursue a minimum of undergraduate education in Sweden (to be produced at the time of admission).
- DD of Rs.1,500/- from any Nationalized bank in favor of Registrar, JNTUA, Payable at Ananthapuramu

KEY DATES

- Last Date for submission of application is extended until: **17/07/2025 (05.00 PM)**
- Awareness Session on Programme: **Will be notified (online)**
- Date of admission counseling: **21/07/2025 (10.00 AM)**



14. Admission Counselling, Key Contacts

ADMISSION COUNSELLING

Candidates are advised to attend the counseling with all original certificates and DD for Rs.1,50,000/- drawn on any Nationalized bank, in favor of "Registrar, JNTUA Ananthapuramu" payable at Ananthapuramu. Two DDs towards special fee, one in favor of "Registrar, JNTUA" payable at Ananthapuramu for Rs. 6000/- and another in favor of "Principal, JNTUA CEA" for Rs. 3000/- payable at Ananthapuramu towards processing fee for admission. Tuition Fee, once paid, shall not be refundable under any circumstances.

No separate intimation letters will be communicated, and more number of candidates may attend the counseling than the number of available seats, and attending the counseling doesn't guarantee admission.

VENUE OF ADMISSION COUNSELLING

Office of Director of Foreign Affairs & Alumni Matters, JNTUA, Ananthapuramu.

KEY CONTACTS

JNTUA

Prof. P. Sujatha
Director, Foreign Affairs & Alumni Matters
Mobile: +91-8008802558
Email: dfaam@jntua.ac.in
B. Sunil Kumar - +91 - 9989944533
C.P. Neelima - +91 - 9441889732

Prof. A. Suresh Babu
Director of Admissions
Mobile: +91- 9440388093
Email: daa@jntua.ac.in

BLEKINGE INSTITUTE OF TECHNOLOGY, SWEDEN

Gurudutt Velpula
International Director
Blekinge Institute of Technology
Karlskrona Sweden
Email: gurudutt.velpula@bth.se
Indiarelations@bth.se
Mobile: +46-734405670
Phani Sekhar
International Coordinator
BTH INDIA STUDENT SUPPORT OFFICE
C/o SIASEU, Hyderabad, INDIA
Email: phanisekhar@siaseu.com
Mobile: +91-9959655670
Whats app +91-8121025670