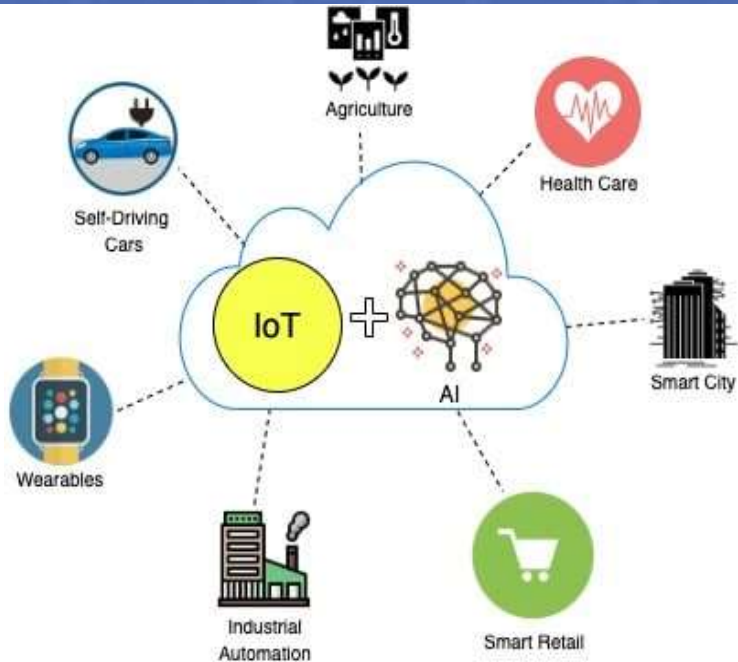
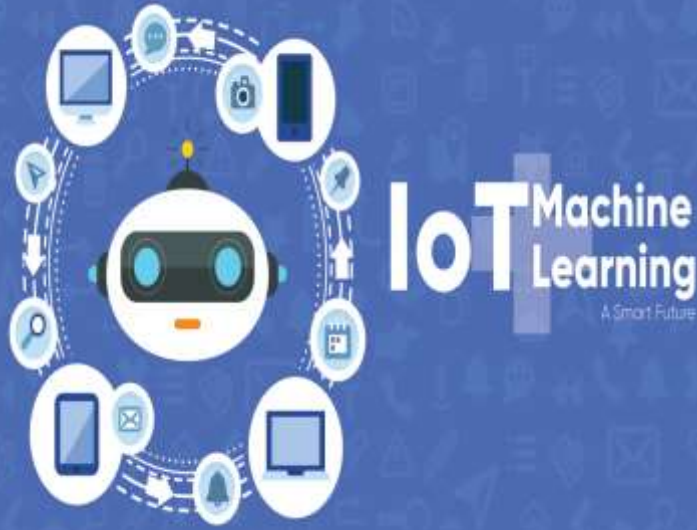


**AICTE-ISTE Sponsored Six Days Online
Induction/Refresher Program
on**

**IOT AND MACHINE LEARNING
03rd – 09th December, 2021**



CHIEF PATRON

Prof. G. Ranga Janardhana

Hon'ble Vice-Chancellor, JNTUA, Ananthapuramu.

PATRON

Prof. M. Vijay Kumar

Rector, JNTUA, Ananthapuramu.

CO-PATRONS

Prof. C. Sashidhar

Registrar, JNTUA, Ananthapuramu.

Prof. P. Sujatha

Principal, JNTUACEA.

CONVENER

Dr. K. Madhavi

HoD, Computer Science and Engineering, JNTUACEA.

COORDINATOR

Prof. C. Shoba Bindu

Prof. of Computer Science and Engineering,
JNTUACEA

&

Director, Research & Development, JNTUA.

Email: shobabindhu.cse@jntua.ac.in

Cell: +91-8143289089

MEMBERS

Prof. B. Eswara Reddy, Director Admissions, JNTUA

Prof. P. Chenna Reddy, Professor of CSE

Prof. S. Vasundra, Director IR & P, JNTUA

Prof. A. Suresh Babu, Professor of CSE

Dr. R. Rajasekhar, Associate Professor of CSE

Dr. K. F. Bharati, Associate Professor of CSE

Dr. B. Lalitha, Associate Professor of CSE

Dr. A. P. Siva Kumar, Associate Professor of CSE



**AICTE-ISTE Sponsored Six Days Online
Induction/Refresher Program
on**

**IOT AND MACHINE LEARNING
03rd – 09th December, 2021**

Organized by

**Department of Computer Science and
Engineering**



**JNTUA College of Engineering (Autonomous)
Ananthapuramu**

Online Registration:

<https://forms.gle/CpMHG278rAm5aRGc8>

ABOUT THE INSTITUTION

JNTUA College of Engineering, Ananthapuramu, is one of the oldest premier colleges in South India, with illustrious alumni. The college is celebrating its 75 years of glory and has an excellent atmosphere for advancement of one's knowledge. In the year 2008 the college has become a constituent college of the newly formed JNTUA, Anantapur. About 155 private Engineering/Pharmacy/MBA colleges in the districts of Ananthapuramu, Kadapa, Kurnool, Chittoor and Nellore are affiliated to JNTUA Ananthapuramu.

This college has vast campus sprawling over an area of 185 acres, in a peaceful atmosphere, away from the dust and din of the town. With this a new era was ushered in Technical Education. Thought the College was initially established to provide basic technical education, with the passage of time, it emerged out, as one of the colleges to fulfill the technical need of our fast developing India with highly professional and well trained graduates.

Ananthapuramu is well connected with major cities like Mumbai, Hyderabad, Bangalore and Chennai by rail and road. It is very near to places of tourist interest like Lepakshi, Hampi, Belum caves and Puttaparthi.

ABOUT THE DEPARTMENT

The department of Computer Science and Engineering has started offering B.Tech programme since 1989 with an intake of 15 students. The present intake for the Bachelor's course is 60. Currently, the department is offering B.Tech, M.C.A, and three M.Tech programmes. The department is also having state of the art facilities for carrying out research equipped with three laboratories, one lab is dedicated for B.Tech students, one for Master's, and one lab for the Research students The department also possesses a library with over 1300 text books, 10 journals and around 45 e-learning resources. The department maintains a central computing center with over 200 systems where, the 1st year students of all the branches are accessing.

ABOUT THE PROGRAMME

Machine Learning is the process of simulation of human intelligence by machines, especially computer systems. These processes include learning (the acquisition of information and rules for using the information), reasoning (using the rules to reach approximate or definite conclusions), and self-correction. Internet of Things (IoT) is becoming ubiquitous with edge sensor nodes getting more and more intelligent and capable to transmit their information directly to a cloud and also get controlled /actuated from the cloud. IoT is made up of millions of sensors and devices that generate unending streams of data. With the IoT we can improve our lives and our businesses in many different ways.

However, the powerful combination of ML and IoT can transform industries and help them make more intelligent decisions from the explosive growth of data every day. IoT is like the body and ML is the brain, together can create new value propositions, business models, revenue streams and services. While both of these disciplines have individual value, their true potential can only be realized together. There are many different applications across multiple industries that require Machine Learning and Internet of Things.

The topics to be covered in this program are as follows:

- Introduction to ML & DL
- Classifiers & Linear Regression Analysis
- Introduction to IoT & Its Architecture
- Integration of IoT & ML with real time examples
- Security & Connectivity Technologies for IoT
- Stress Management & NEP 2020

OBJECTIVES

- The main objective of this program is to improve quality and equity in engineering teachers in order to up-grade the knowledge, enhancing research and teaching Skills.

- This Program will help the participants to develop a basic understanding of objects, sensors, and everyday appliances related to IoT.
- This Program will cover recent trends and advancement of IoT and machine learning concepts.
- To ensure that the faculty members are trained in the niche area of IoT, machine learning techniques and its use in real time applications.

RESOURCE PERSONS

Experienced faculty from renowned universities/premier institutes, industry experts and host Institution.

ELIGIBILITY

This program is open to Faculty Members and Research Scholars of AICTE approved Engineering colleges and Polytechnic colleges. There will be a maximum of 100 participants selected based on first come first serve. Priority will be given to ISTE Life Members.

ADDRESS FOR COMMUNICATION

Prof. C. Shoba Bindu,
Coordinator

Professor, Department of CSE, JNTUACEA,
Ananthapuramu - 515 002 (A.P)

Email: shobabindhu.cse@jntua.ac.in, shobabindhu@gmail.com

Cell: +91-8143289089

REGISTRATION DETAILS

Eligible participants are requested to fill the online registration form on or before 20/11/2021 (<https://forms.gle/CpMHG278rAm5aRGc8>)

There is **No Registration Fee**. The certificates will be issued to those who maintains minimum 80% attendance and scores minimum 60% marks in the test at the end of the online program and also in the random test on daily basis.